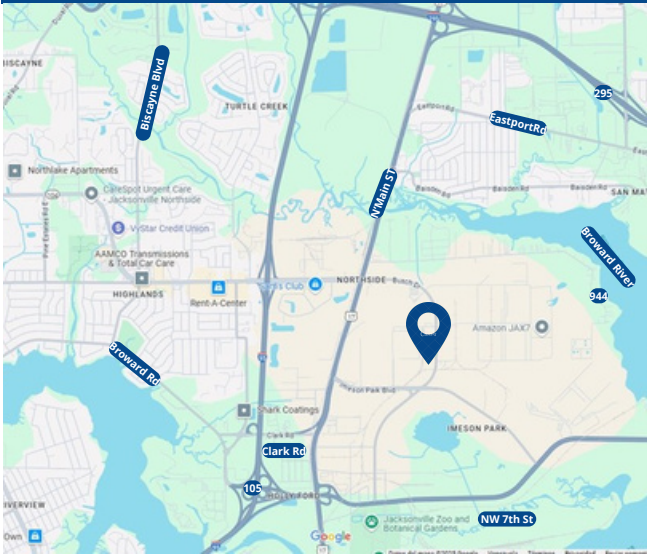




SUBLEASE AT IMESON INDUSTRIAL PARK



For more information contact:

Elias G. Patsalos, CCIM

Phone: 305-804-9154

Email: elias@agorare.com

Michal Bibr

Phone: 305-458-4140

Email: michal@agorare.com

PROPERTY FEATURES

- 21,600 SF Warehouse (Fenced area)
- 4 Docks
- 22' Clear Ceiling Height
- Available Office Area
- T-12 Lighting
- Building Depth 270'
- Truck Court Depth 134'
- Wet Fire Sprinkler Protection
- Available Immediately
- Sublease Until 08/31/2028

SUBLEASE RATE

\$9.95 PSF GROSS



Scan the QR code
for more information

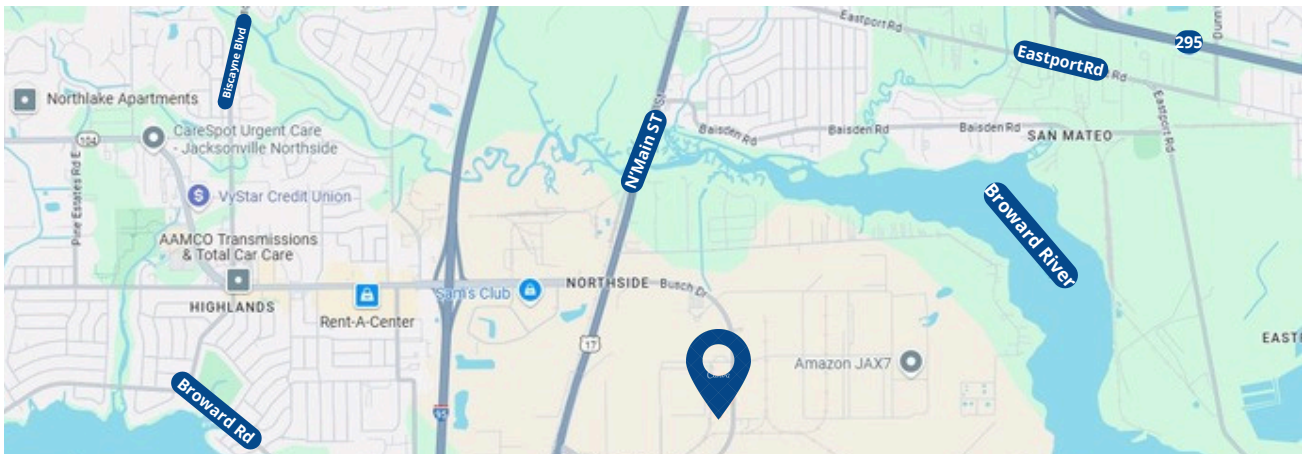
Agora Real Estate Group

7500 NW 25th Street, Suite 237, Doral, Florida 33122

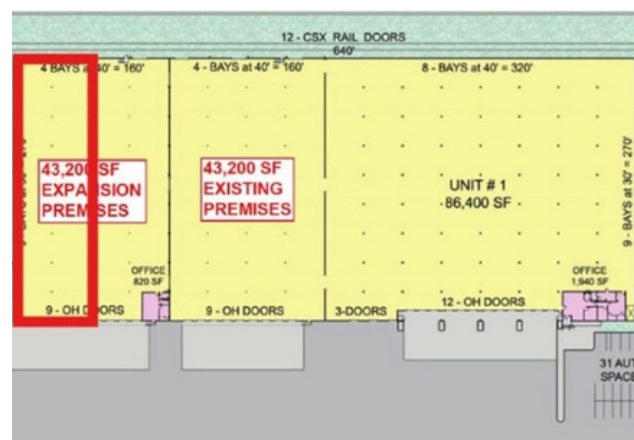
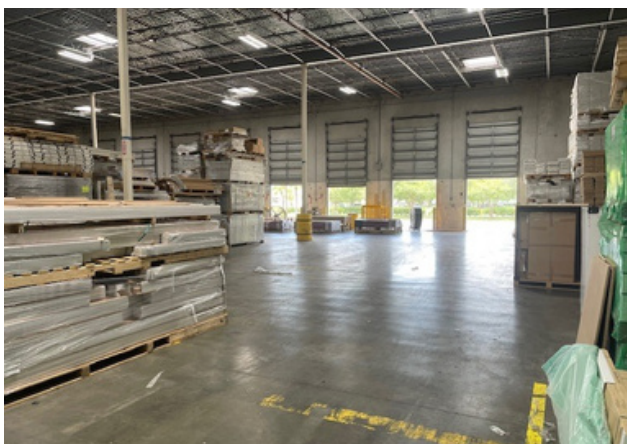
P: +1 (305) 804-9154 | F: +1 (866) 708-2763 | E: info@agorare.com

No warranty or representation, expressed or implied, is made as to the accuracy of the information contained herein, and same is submitted subject to errors and omissions.

Location and Access



Property Photos



Agora Real Estate Group

7500 NW 25th Street, Suite 237, Doral, Florida 33122

P: +1 (305) 804-9154 | F: +1 (866) 708-2763 | E: info@agorare.com

No warranty or representation, expressed or implied, is made as to the accuracy of the information contained herein, and same is submitted subject to errors and omissions.