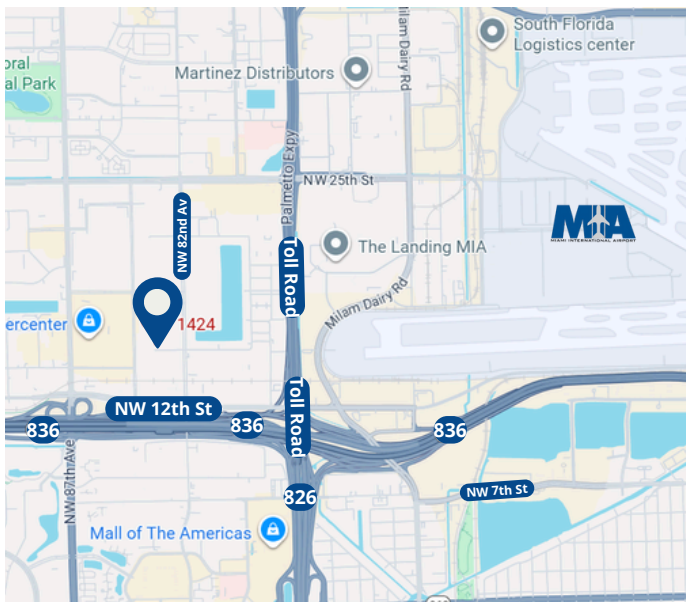




## REFRIGERATED SPACE FOR SUBLEASE +/- 5,000 SF



## PROPERTY FEATURES

- +/- 5,000 SF Total Available
- +/- 3,000 SF Cooler Space
- +/- 500 SF Dry Warehouse
- +/- 1500 SF Office Area
- 2 Dock High Doors
- 24" Ceiling Height
- Twin-T Concrete Roof
- Available Immediately
- Sublease Expiration: 31 Jan 2030

### For more information contact:

**Elias G. Patsalos, CCIM**  
Phone: 305-804-9154  
Email: [elias@agorare.com](mailto:elias@agorare.com)

**Michal Bibr**  
Phone: 305-458-4140  
Email: [michal@agorare.com](mailto:michal@agorare.com)

**SUBLEASE RATE**  
**22.75 PSF Gross**

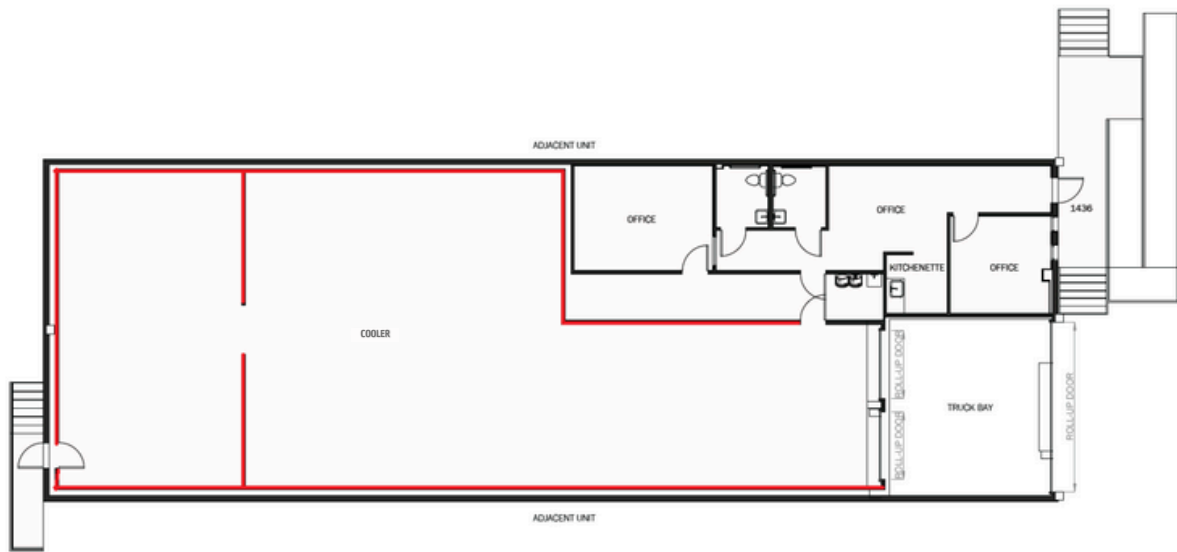


Scan the QR code  
for more information

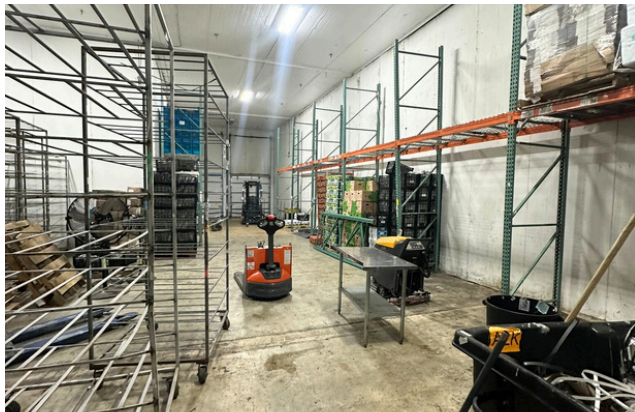
#### Agora Real Estate Group

7500 NW 25th Street, Suite 237, Doral, Florida 33122  
P: +1 (305) 804-9154 | F: +1 (866) 708-2763 | E: [info@agorare.com](mailto:info@agorare.com)

No warranty or representation, expressed or implied, is made as to the accuracy of the information contained herein, and same is submitted subject to errors and omissions.



## Property Photos



### Agora Real Estate Group

7500 NW 25th Street, Suite 237, Doral, Florida 33122

P: +1 (305) 804-9154 | F: +1 (866) 708-2763 | E: [info@agorare.com](mailto:info@agorare.com)

No warranty or representation, expressed or implied, is made as to the accuracy of the information contained herein, and same is submitted subject to errors and omissions.